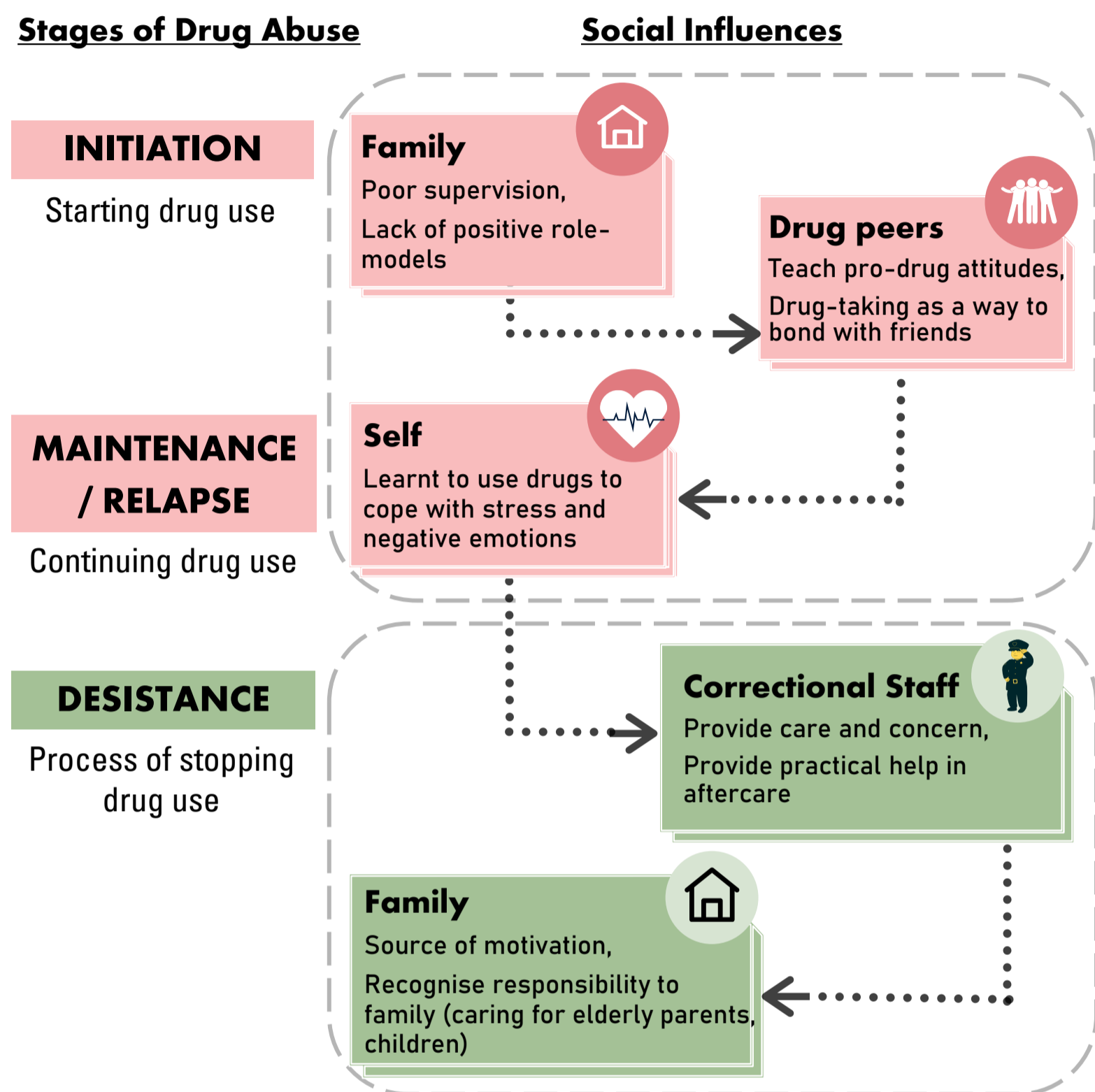


# Social Influences on Drug Use and Desistance

## Who are the key influences for an individual's drug abuse and desistance?

An SPS research study found that different social actors influence a drug abuser at different stages of drug abuse



## What changes occur between periods of drug-taking and desistance?



### Change in social circle

- Reduced time spent with drug peers
- Surrounded by prosocial support system



### Change in self-identity and relation to others

- Recognise responsibility to family
- De-prioritise antisocial peers

## What can we do to positively influence individuals towards desistance?

### Provide a supportive social circle for change



- ✓ Build on day-to-day moments to reinforce their application of skills outside of incare programme sessions, or when in the community

### Reinforce their prosocial identity



- ✓ Facilitate their cost-benefit-analyses and reflection of actions on loved ones
- ✓ Remind them about their goals for family and work beyond prison and aftercare supervision, towards the future lives they hope to lead